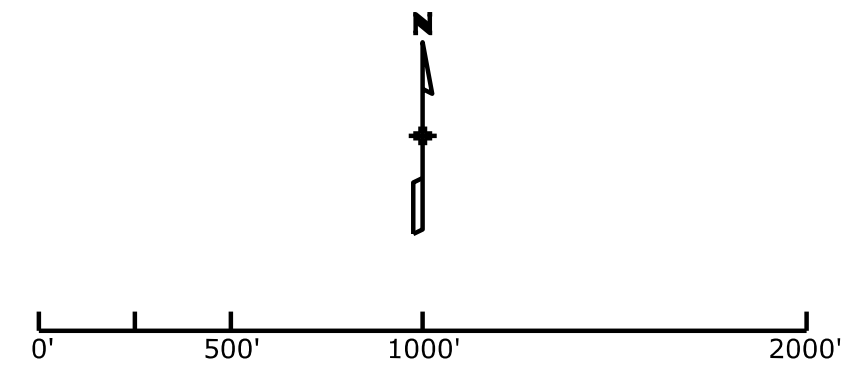


I-25/I-80 Interchange Project

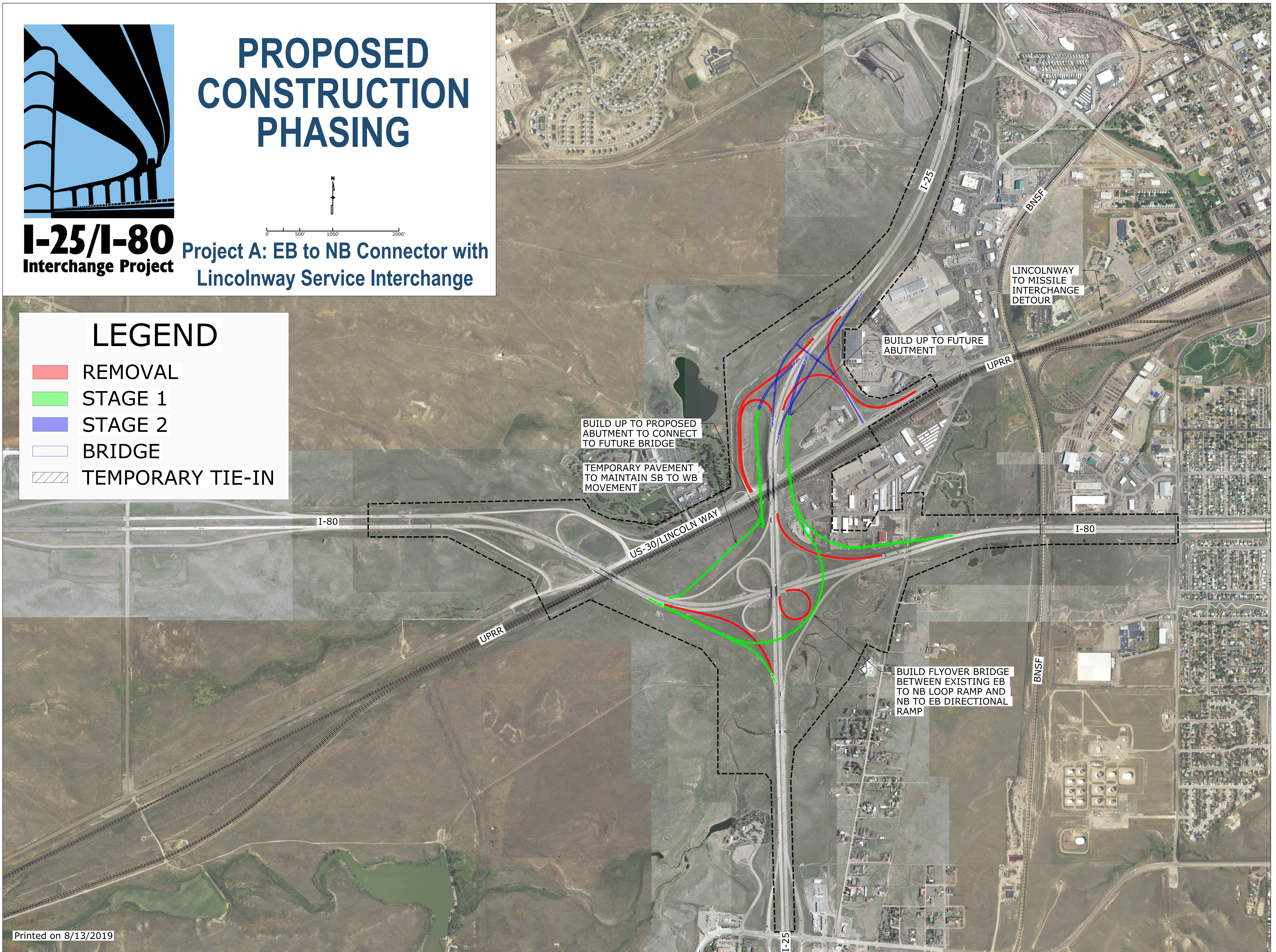
PROPOSED CONSTRUCTION PHASING

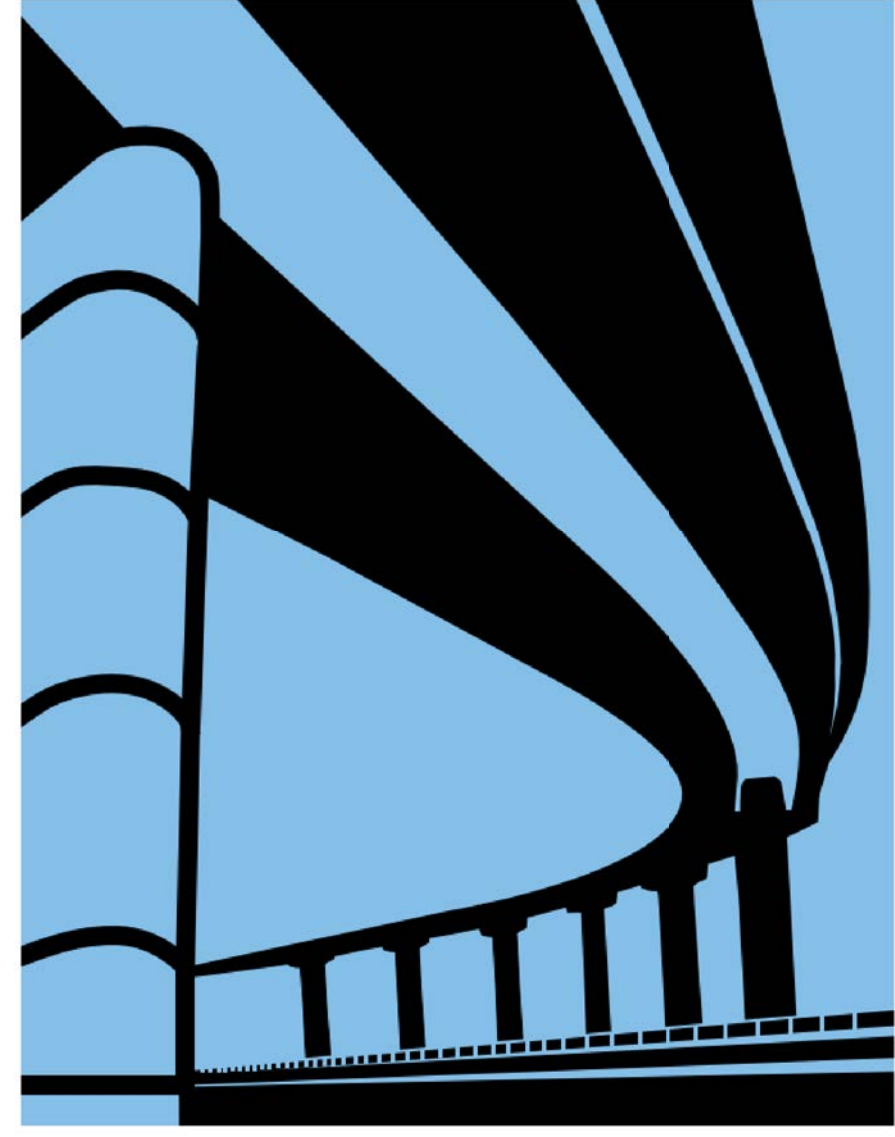
Project A: EB to NB Connector with Lincolnway Service Interchange



LEGEND

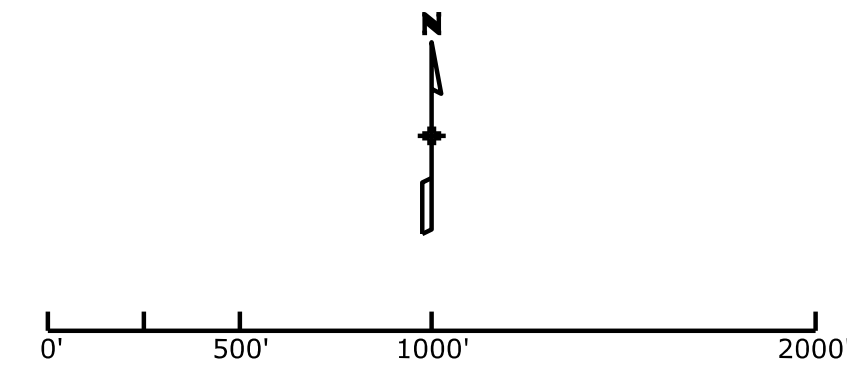
- █ REMOVAL
- █ STAGE 1
- █ STAGE 2
- BRIDGE
- TEMPORARY TIE-IN







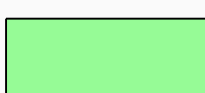
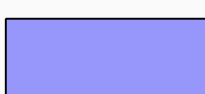

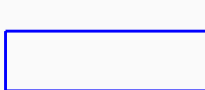

I-25/I-80
Interchange Project

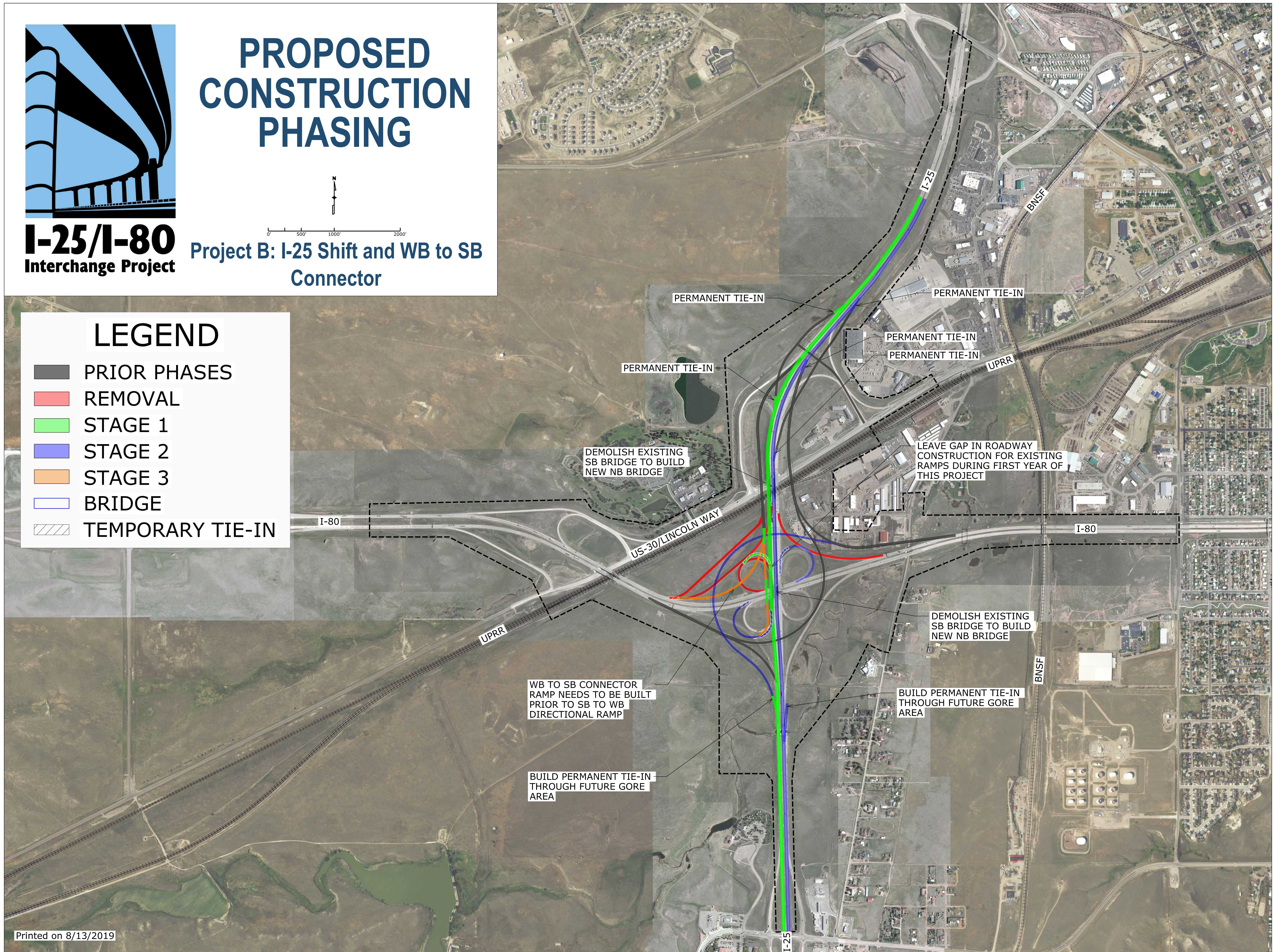
PROPOSED CONSTRUCTION PHASING

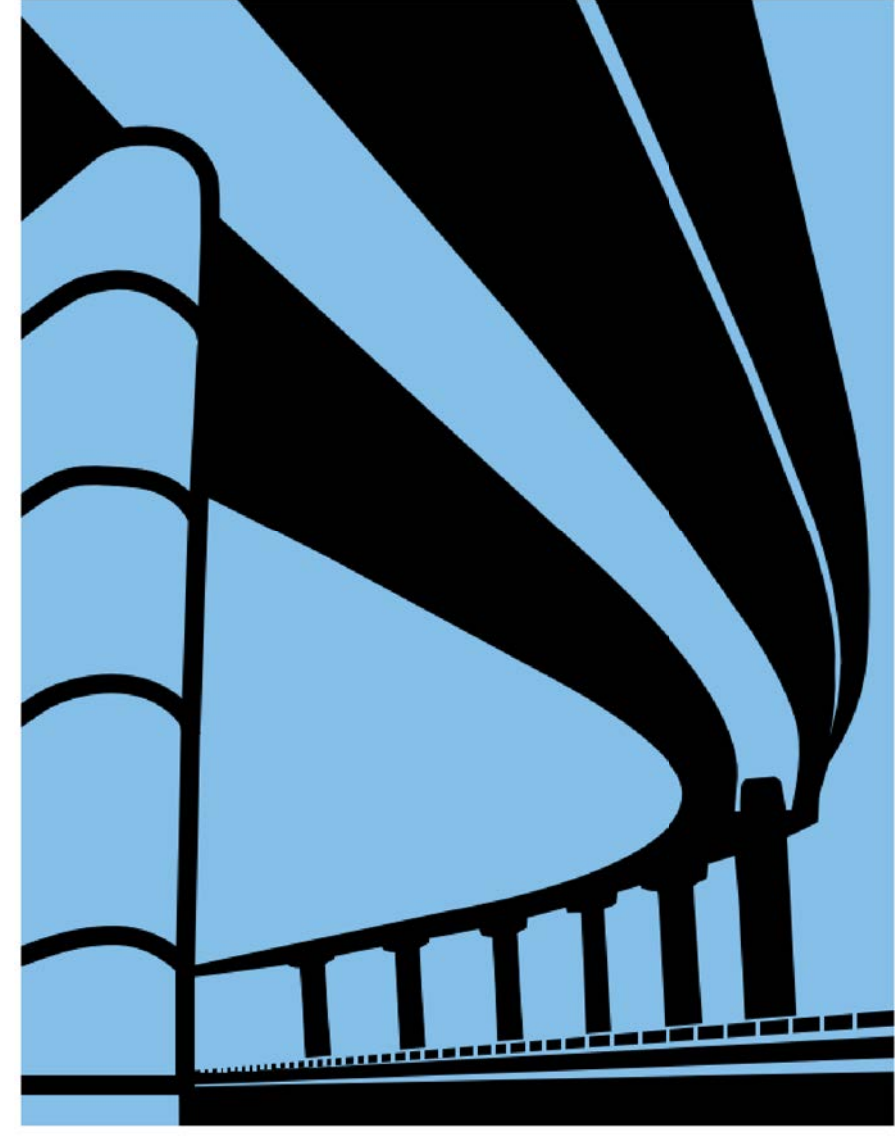


Project B: I-25 Shift and WB to SB
Connector

LEGEND

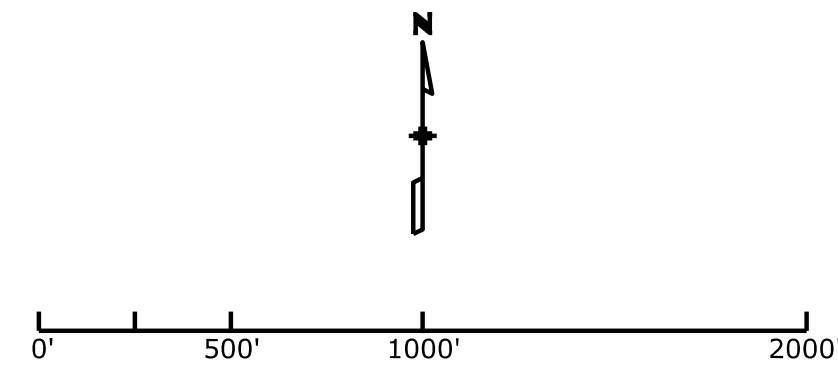
-  PRIOR PHASES
-  REMOVAL
-  STAGE 1
-  STAGE 2
-  STAGE 3
-  BRIDGE
-  TEMPORARY TIE-IN






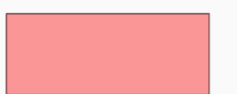
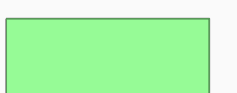

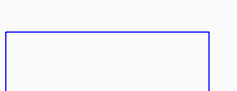

I-25/I-80
Interchange Project

PROPOSED CONSTRUCTION PHASING



Project C: I-80 Realignment

LEGEND

-  PRIOR PHASES
-  REMOVAL
-  STAGE 1
-  STAGE 2
-  BRIDGE
-  TEMPORARY TIE-IN

